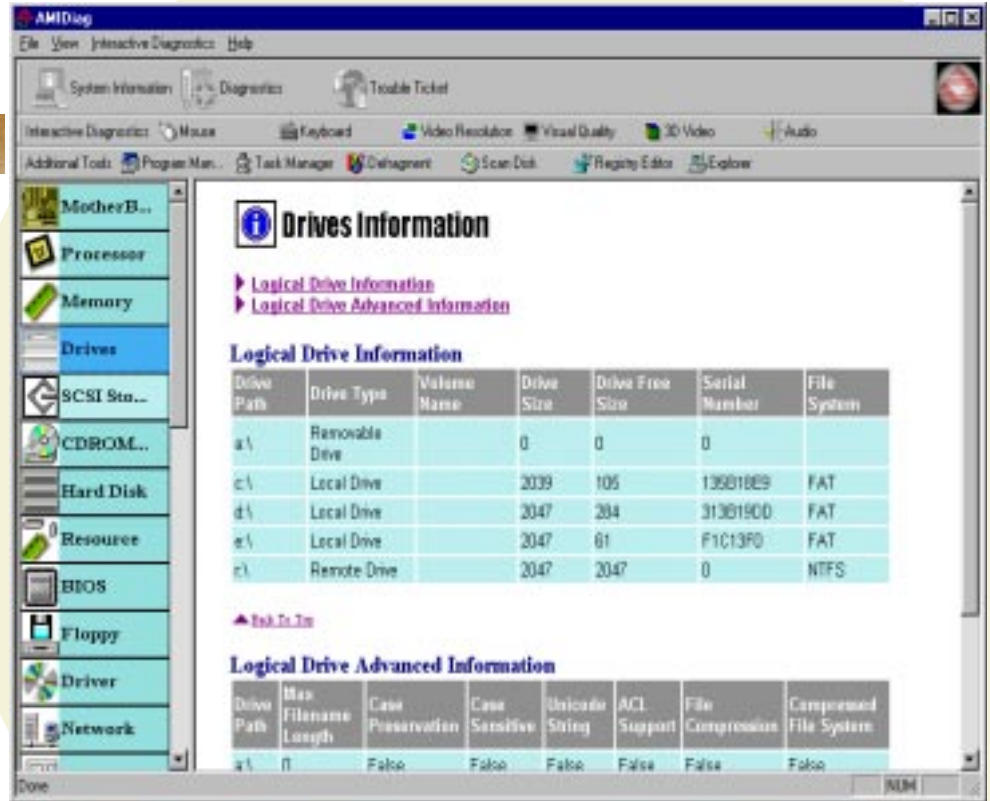


AMIDiag for Windows

Diagnostic Software for the Windows Environment



AMIDiag for Windows Offers Advanced Diagnostic Capabilities for Windows® 9x/ME/NT/2000

Advanced Features

- Compatible with Windows 95/98/ME/NT/2000
- System Information for Major Components
- Diagnostics for Major Components
- Interactive Diagnostics
- Trouble Ticket in HTML Format
- Modules Based on ATL/COM
- Customizable Components with Documentation
- Add Third Party Diag/Information Modules

Operating Systems

Windows[®] 95/98/ME
Windows[®] NT/2000

COM Controls

Easily Insertable and Removeable COM Controls
All System Information Implemented as COM Controls
All Diagnostics Implemented as COM Controls
COM Controls Designed to Allow Insertion of Management Layer Between Console Plug In and Core Control

Connectivity

Local Only

Inventory Information

Memory Controller & Devices
Physical Drives
Logical Drives
BIOS
Video Adapter
Parallel Ports
Serial Ports
Modem
Network Adapter & Protocols
Device Drivers
CDROM
Floppy Drives
Keyboard
Mouse
OS Information

Diagnostics

Detailed Diagnostics for Subsystems
Multi-Level Diagnostics - Basic and Extended
Progress and Status Notification
Diagnostics for Human Interface Devices
- Keyboard, Mouse, Video, Audio

Diagnostics Modules Included

CDROM
- Sequential Read Test
- Random Read Test
Processor
- CPU Register Test
- CPU Stack Test
- CPU Instructions Test
- CPU Bit Set Test
- FPU Control Word Test
Floppy
- Random Read Test
- Random Seek Test
- Sequential Read Test
- Sequential Seek Test
Hard Disk
- Random Read Test
- Random Seek Test
- Sequential Read Test
- Sequential Seek Test
Memory
- Walking 0 Test
- Walking 1 Test
- Pattern Test
Modem
- Dial Tone Test
- Dial Tone and LoopBack Test
Network
- Network Ping Test
- Network HTTP Test
Parallel Ports
- Port Register Test
Serial Ports
- Register Test
- Interrupt ID Test
- Line Status Test
- Data Transfer Test
Video
- Video Gradient Test

Interactive Diagnostics Included

Keyboard
- Scan Code Check
- ASCII Code Check
Mouse
- Speed Test
- Double Click Speed Test
Video
- Video Resolution Test
- Visual Quality Test

- 3D Video Test
Audio
- Volume Test
- Speaker Test
- Wave File Test
- Frequency Synthesis Test

Trouble Ticket

Generated in Text or HTML Format
Complete System Inventory Report
Complete Diagnostics Report
Results Gathered are Sent in E-mail to Previously Determined Address

OEM Customization

Add New Components
Add New Information Views with New Icons
Remove Selected Information Views
Customizable Trouble Ticket
OEM Supplied Diagnostics can be Added

Hardware Information

System Summary
Motherboard Information
USB Information
ACPI Information
Resource Information
Enhanced VGA Information
Printer Information

Storage

IDE Information
DVD Information/Test
LS120 Test
ZIP Drive Information/Test
SCSI Information/Test

Misc. Tests

AGP Test
Enhanced Serial Port Test with Loopback
Enhanced Parallel Port Test with Loopback
Connect to System Tools

OS Info

Internet Information
System Files Information
Windows Class Information
Active Module and Process Information
NT Services Information

AMIDiag for Windows is an interactive utility that offers advanced capabilities for the Windows 9x/ME/NT/2000 Operating Systems including system information for major components, system diagnostics and interactive diagnostics. Designed with the consumer in mind, the AMIDiag for Windows GUI is easy to navigate and allows for user-friendly interaction and comprehension. AMIDiag for Windows offers several fully interactive features including mouse, keyboard, video resolution, 3D video and audio tests, which enable the administrator to view results as they run. AMIDiag software solutions are Windows[®] ME enabled

© 2001 American Megatrends Inc.
Specifications are subject to change without notice. Products mentioned may be trademarks or registered trademarks of their respective companies. All rights reserved.



American Megatrends Inc. 6145-F Northbelt Parkway,
Norcross, GA 30071-2976 • Sales (800)828-9264
Main (770)246-8600 • Fax (770)246-8790
www.ami.com

AMI International Offices

Germany: [49]89-9699-9510 • Fax [49]89-9699-9519
United Kingdom: [44]208-848-8686 • Fax [44]208-848-8588
Japan: [81]3-5812-0020 • Fax [81]3-5812-0022
Taiwan: [886]2-2716-0036 • Fax [886]2-2718-1121
Korea: [82]2-569-5689 • Fax: [82] 2-569-4689