



StorTrends® 3400 Software Installation Procedure for StorTrends iTX (version 2.8)

MAN-3400-ITX27-INST
04/22/2011

© Copyright 1985-2011 American Megatrends, Inc.
All rights reserved.
American Megatrends, Inc.
5555 Oakbrook Parkway,
Building 200
Norcross, GA 30093

This publication contains proprietary information that is protected by copyright. No part of this publication can be reproduced, transcribed, stored in a retrieval system, translated into any language or computer language, or transmitted in any form whatsoever without the prior written consent of the publisher, American Megatrends, Inc.

All trademarks and trade names used in this document refer to either the entities claiming the marks and names or their products. American Megatrends, Inc. disclaims any proprietary interest in trademarks and trade names other than its own.

Revision History

12/23/2010	Preproduction release
04/22/2011	Updated term from Canister to Controller

Disclaimer

Although efforts have been made to assure the accuracy of the information contained here, American Megatrends expressly disclaims liability for any error in this information, and for damages, whether direct, indirect, special, exemplary, consequential or otherwise, that may result from such error, including but not limited to the loss of profits resulting from the use or misuse of the manual or information contained therein (even if American Megatrends has been advised of the possibility of such damages). Any questions or comments regarding this document or its contents should be addressed to American Megatrends at the address shown on the inside of the front cover.

American Megatrends provides this publication “as is” without warranty of any kind, either expressed or implied, including, but not limited to, the implied warranties of merchantability or fitness for a specific purpose.

Some states do not allow disclaimer of express or implied warranties or the limitation or exclusion of liability for indirect, special, exemplary, incidental or consequential damages in certain transactions; therefore, this statement may not apply to you. Also, you may have other rights that vary from jurisdiction to jurisdiction.

This publication could include technical inaccuracies or typographical errors. Changes are periodically made to the information herein; these changes will be incorporated in new editions of the publication. American Megatrends may make improvements and/or revisions in the product(s) and/or the program(s) described in this publication at any time.

Requests for technical information about American Megatrends products should be made to your American Megatrends authorized reseller or marketing representative.

STOP!

**THIS DOCUMENT DESCRIBES HOW TO INSTALL THE STORTRENDS DUAL
CONTROLLER IP-SAN SOFTWARE ON THE STORTRENDS 3400 DUAL CONTROLLER IP-
SAN STORAGE APPLIANCE ONLY.**

Installation Procedure

STOP!

YOUR STORTRENDS 3400 DUAL CONTROLLER IP-SAN STORAGE APPLIANCE IS SHIPPED WITH THE STORTRENDS ITX 2.8 SOFTWARE ALREADY INSTALLED. FOLLOW THE INSTRUCTIONS IN THIS DOCUMENT ONLY IF YOU NEED TO RE-INSTALL THE STORTRENDS ITX 2.8 DUAL CONTROLLER IP-SAN SOFTWARE!

WARNING!

ALL INFORMATION STORED ON THE STORTRENDS® STORAGE APPLIANCE WILL BE ERASED. THIS INCLUDES ALL USER RIGHTS, TARGET INFORMATION AND SO ON.

STOP!

BACKUP ALL DATA STORED ON YOUR STORAGE APPLIANCE BEFORE PROCEEDING!

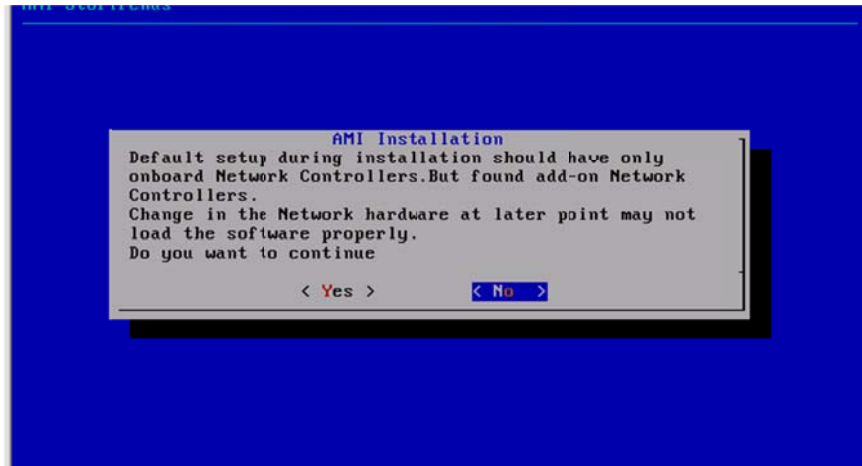
Overview

Use the steps outlined in this document to re-install the StorTrends® Dual Controller IP-SAN software onto your storage appliance. This process is fast and should take less than 10 minutes.

Remove Any PCI NIC Add-on Cards

STOP!

IF YOU HAVE INSTALLED AN EXTRA NIC IN YOUR CONTROLLERS, A WARNING WILL BE DISPLAYED BEFORE PROCEEDING WITH THE INSTALLATION.

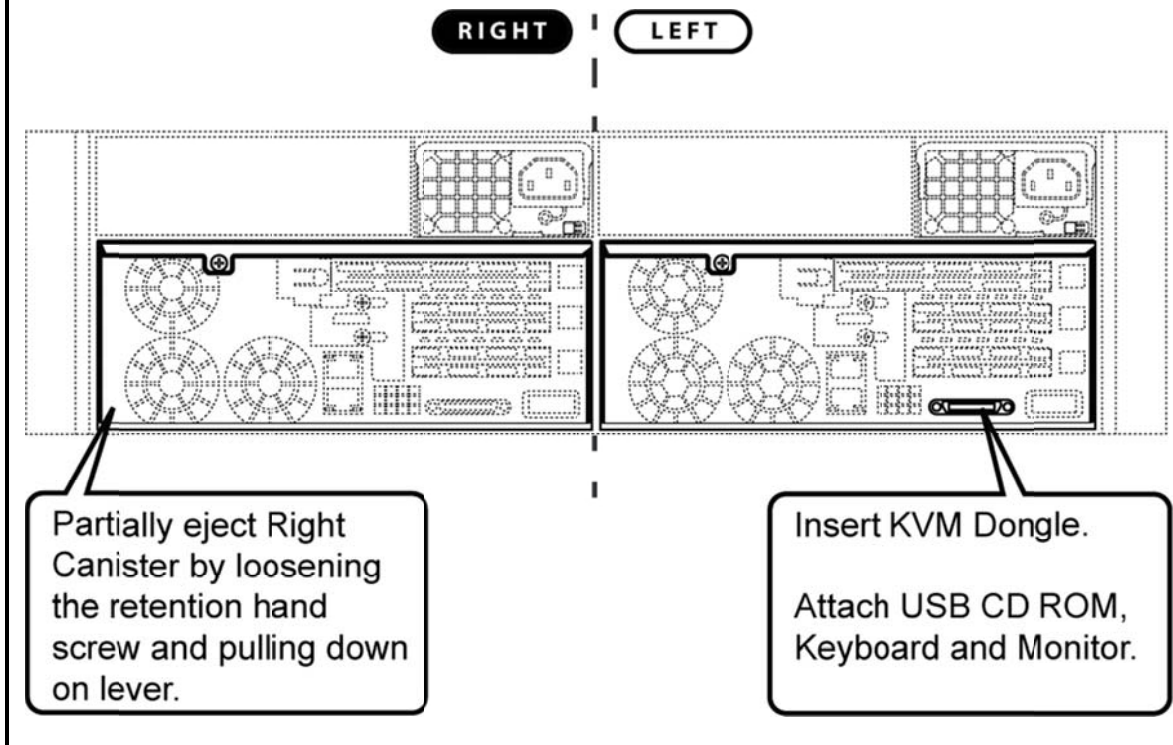


Making changes to the default StorTrends hardware configuration may cause your StorTrends iTX software license to go into evaluation mode. This includes adding or removing NIC cards, replacing the Controller server board and so on. If this happens you can contact AMI Technical Support and request a new License Key. Please have your Service Key available. The Service Key can be generated from the Update License page, which is located in the StorTrends iTX Control Panel.

Making any additional changes to your hardware configuration after your license key has been applied to your StorTrends iTX installation may cause StorTrends iTX not to load properly.

STOP!

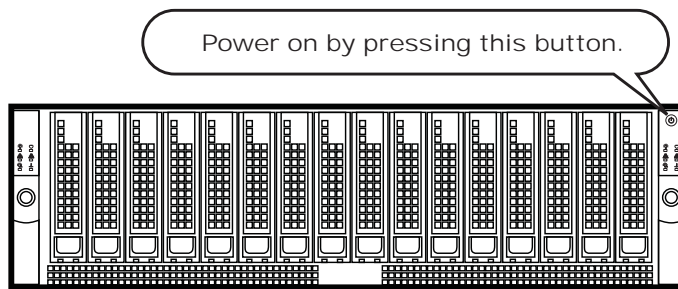
The installation requires that only the Left Controller be power ON and that the Right Controller be powered OFF. The easiest way to ensure this is to partially eject the Right Controller.



Attach the KVM Dongle to the Left Controller

Attach the *KVM Dongle* to the **Left Controller**. Plug your USB CD-ROM drive along with a keyboard and monitor into the *KVM Dongle*. Power on your StorTrends® Storage Appliance and insert the *StorTrends® Storage Appliance CD* into the CD-ROM drive.

Power On



Begin the Installation

You should see the *Welcome to AMI StorTrends ITX* screen. If not, you have to reset the power on your StorTrends 3400 storage appliance and start over.

Press the <ENTER> to continue.

```
American Megatrends Inc
-----
Welcome to AMI Stortrends ITX.

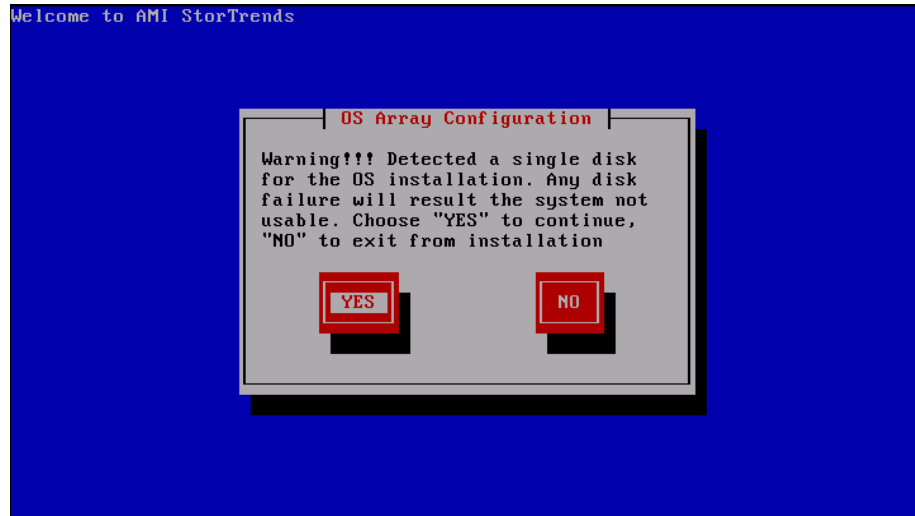
To install on 3200i/1300i/2200i, press the <ENTER> key.
To install on Intel Helena Island(SS4200-E), type helena and press the <ENTER> key.

boot: _
```

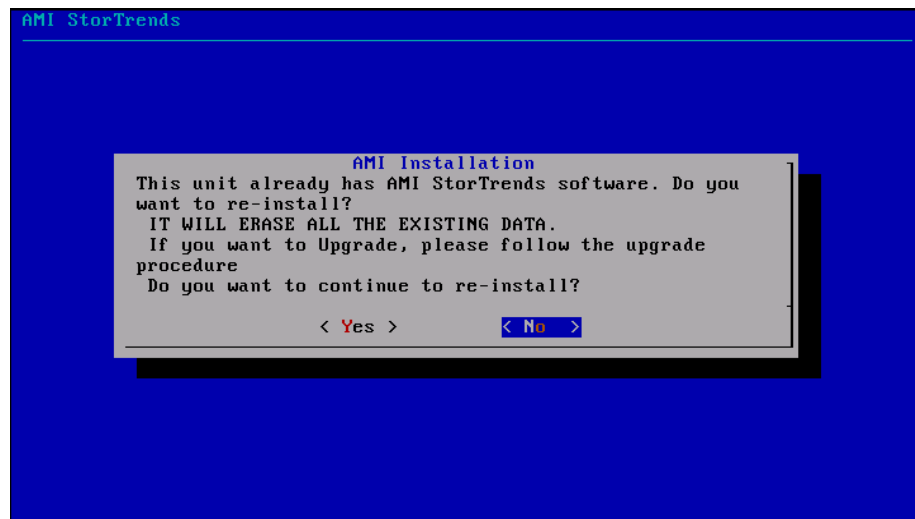
Warning and Prompts

The StorTrends iTX installation begins, but before it proceeds, it will prompt you with a message depending on how many hard disk drives you have installed. Your StorTrends 3400 storage appliance can hold up to 16 hard disk drives.

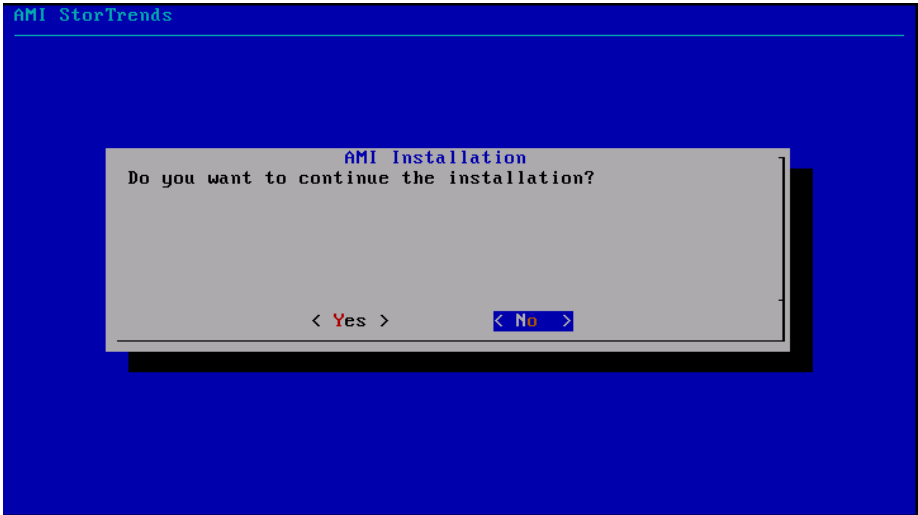
If there is only one hard disk drive installed, you will be prompted with a message stating, "Warning!!! Detected a single OS disk for the StorTrends iTX installation. Any OS disk failure will result in the system becoming unusable. Choose "YES" to continue, "NO" to exit from the installation."



If there is already an existing installation it will prompt you if you wish to perform a re-installation. A reinstallation will erases all existing data.

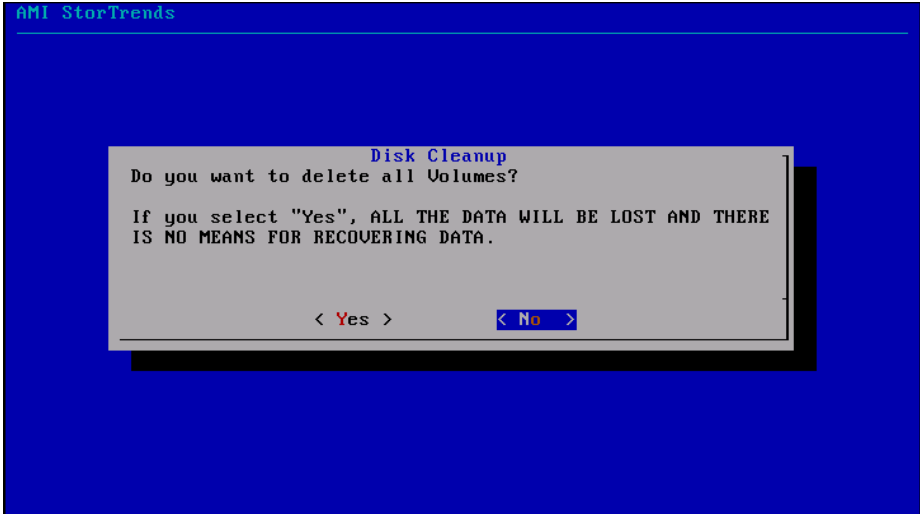


You are prompted to confirm that you want to install StorTrends iTX.

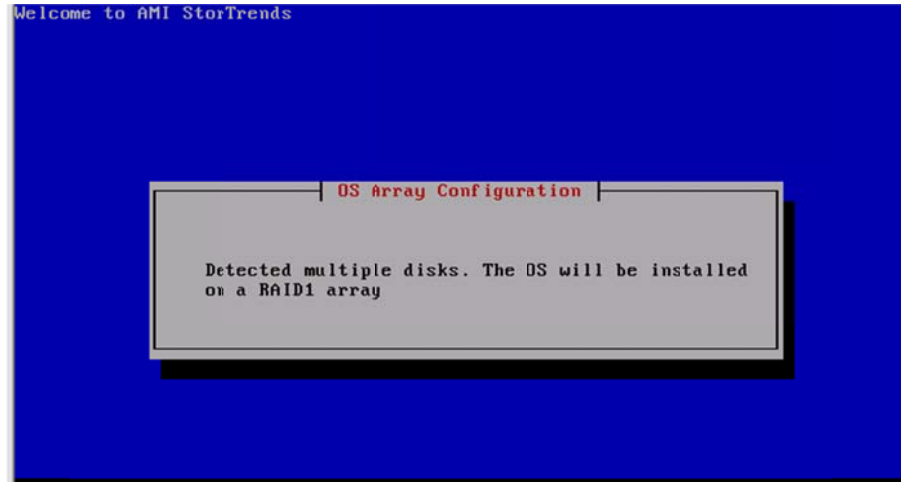


Note:

During a reinstallation, you will have the option to retain all Volume data. By default, "NO," is selected. Also, you will be prompted more than once.



If two (or more) hard disk drives are installed, StorTrends iTX will automatically detect them and will mirror the installation of itself over both hard disk drives. Prior to beginning the installation, you will be prompted with the following message, “**Detected multiple disks. The OS will be installed on a RAID 1 array.**”

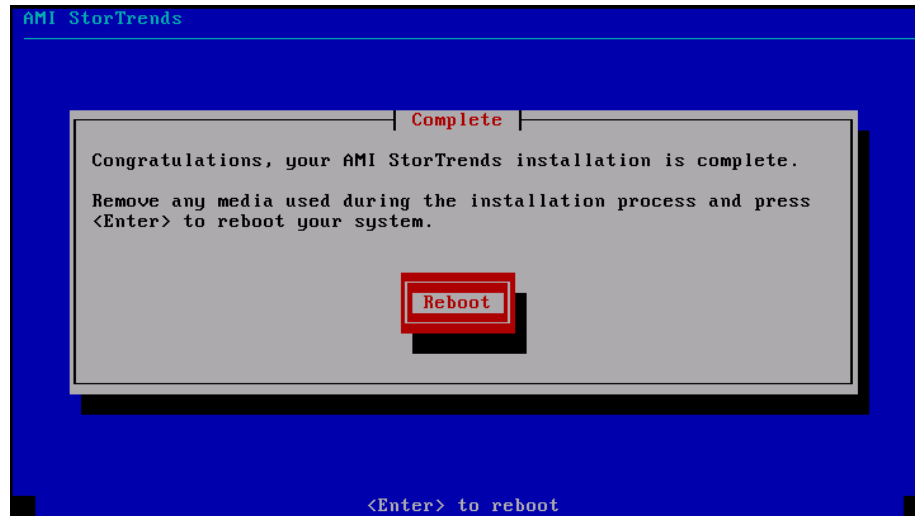


Note:

It is recommended that you install at least two hard disk drives.

Installation Duration and Completion

The StorTrends iTX installation takes approximately 10 minutes. You will see various screens throughout the installation. At times there will be a long period where you will see a blank screen. However, do not try to do anything. Leave the system alone until the *StorTrends iTX Installation CD* ejects and you see the screen where it tells you that the installation is complete.



Press the <ENTER> key to reboot.

Congratulations!

You have successfully installed StorTrends iTX on your StorTrends storage appliance.

Push your *Right Controller* all the way into its slot, hand-tighten the thumb screw and unplug your *KVM Dongle*. You should be good to go!