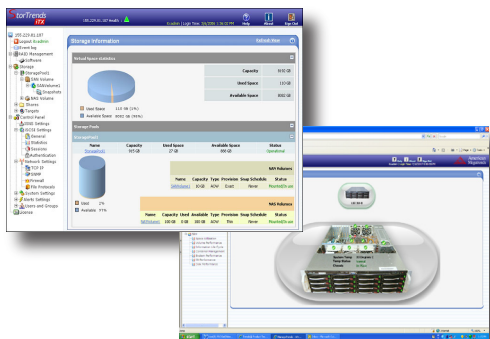


StorTrends® iTX 2.7

Dual Dialect IP-SAN & NAS Data Storage Software



StorTrends® iTX 2.7 Data Storage Software provides both file and block-based storage functionality in a single, intuitive software product, enabling businesses to use existing Ethernet networks to simplify data management and reduce storage complexity. Designed to meet the rigorous demands of today's data centers, it's cost-effective, scalable, and suitable for both novice and advanced users.

StorTrends® allows users to enjoy the advantages of storage centralization, the scalability of IP-based Storage Area Networks (IP-SAN), and the ease of use and file-sharing of Network Attached Storage (NAS) - on a single platform at an attractive price. Flexible configuration options grant users a "grow as you go" approach that suits tight budgets as well as the most sophisticated storage needs.

Featuring real platform independent High Availability and excellent support for virtualized and clustered application servers, StorTrends is the solution of choice for those who want to get the most out of their storage.

Data Sheet . . .
09 28 2009

HIGHLIGHTS

- > "Single Pane of Glass" Storage Array Management with ManageTrends™ web-based GUI
- > OS and Platform-independent High Availability (HA) Pair through IP Virtualization
- > Disaster Recovery (DR) solutions across multiple sites
- > Continuous Data Protection (CDP)
- > Information Lifecycle Management (ILM)
- > WAN Data Services (WDS) to improve data transfer speeds during remote replication
- > Storage Resource Management (SRM)
- > Thin, Exact and Auto Provisioning
- > Advanced Snapshot Architecture
 - Redirect on Write (ROW)
 - 1022 read-only/writable snaps per volume
 - 2048 snapshots per box
 - Snapshot scheduling
 - Random snapshot rollback / deletion
- > Volume Replication
 - Synchronous
 - Asynchronous
 - Snap-assisted (continuous/periodic)*
 - Journal-assisted*
- > Setup, Replication & Recovery Wizards
- > Simple Failover / Failback Operation
- > RAID Support (Software and Hardware)
- > Smart UPS Support

StorTrends® iTX 2.7 provides enterprise-level performance, high availability and disaster recovery at a price that appeals to small and medium-size businesses (SMB).

Synchronous Replication enables data to be stored on multiple StorTrends appliances over a connected Storage Area Network (SAN) for High Availability (HA) and Disaster Recovery (DR) capability. Multi-platform and OS agnostic HA technology allows two StorTrends SAN heads to be grouped as highly available clustered nodes for "always-up" availability to protect against disk, path, and node failure and enable seamless, automatic failover and failback.

Sophisticated Asynchronous Replication technology means fast and bandwidth-efficient data transfers. Various replication topologies are supported to enable data centers to implement a robust DR strategy. Using this, two clustered iTX HA nodes can be replicated to multiple remote sites to offer a complete end-to-end DR solution. The ingenious WAN Data Services module employs data compression, deduplication, and link optimization to boost transfer speeds during remote replication.

The patented Redirect on Write

(ROW) technology in the Advanced Snapshot architecture enables StorTrends® iTX to offer industry-leading RPO and RTO. Snapshot-assisted Replication (SAR) replicates delta snapshots from the primary system in chronological order to one or more secondary sites. In the event of a failover, the system will automatically recover to the latest available consistent snapshot image. Consistency groups assure that application-aware snapshots are taken at the same time across multiple volumes.

Thin Provisioning allows the administrator to create and manage storage volumes without capacity restrictions, for a cost-efficient "grow as you go" paradigm. Auto Provisioning for NAS volumes helps the administrator create network shares with efficient capacity provisioning techniques, offering all of the advantages of Thin Provisioning without any of the typical pitfalls.

Finally, the integrated ManageTrends™ web-based management application provides a user-friendly "single pane of glass" graphical interface. Streamlined configuration wizards are available to simplify the configuration and execution of nearly all storage management tasks.



StorTrends® iTX 2.7

Dual Dialect IP-SAN & NAS Data Storage Software

Features

StorTrends® iTX 2.7 Dual Dialect Storage Software

Advanced Features

- O/S Agnostic and Multi-platform High Availability
- Adaptive Provisioning / Provision Tracking
- Advanced Replication
 - Synchronous
 - Asynchronous
 - Snapshot-assisted & Journal-assisted*
- Replication Wizard
- Simple Failover / Failback Operation
- Information Lifecycle Management (ILM)
- Continuous Data Protection (CDP)
- Storage Resource Management (SRM)
- WAN Data Services (WDS)
- Snap-Assisted Replication (SAR) with Link acceleration, Data de-duplication, Compression and Encryption
 - Storage Alerts
 - Support for volumes up to 256 TB*
 - Support for up to 64 volumes
 - Volume Expansion
- Advanced Snapshots
 - Redirect (allocate) on Write (ROW)
 - Mount as Read-Only or Read-Write
 - Up to 1022 read-only snapshots per volume
 - Up to 1022 writeable snapshots per volume
 - Up to 2048 snapshots per box
 - Near-zero degradation
 - Random Snapshot Deletion
 - Rollback to any snapshot
- Advanced Caching

Backup

VSS-based backup support for Windows® Servers

Backup agents for popular application servers like Microsoft® Exchange Server and Oracle®

SAN & NAS Snapshot Scheduling

Intuitive Snapshot Management

iSCSI Tape Backup Support

Networking

TCP/IP, FTP, HTTP/HTTPS, SNMP, DHCP, NDMP, UPnP

NAS supports Windows® (CIFS) and Linux (NFS) file protocols

iSNS Configuration

Up to 16 iSNS servers are supported

Compatible with Microsoft® iSNS Server v3.0 and later versions

iSNS Client Supporting Draft 22 of iSNS Specification

Security

ACL security implementation supports:

- Local users
- Windows® NT/2000/2003/2008 Domain users
- NIS Domain users

iSCSI Target Configurations

iSCSI Qualified Name (iqn) format

Enable/Disable individual network ports for iSCSI traffic

iSCSI target supporting iSCSI RFC 3720

iSCSI error recovery level 0, 1 and 2

Maximum of 4 connections per session

Maximum of 64 target volumes

Multiple levels of authentication:

Mutual CHAP, User Name/Password CHAP

Authentication & iSCSI initiator

WWN Name

iSCSI Portal Tag Configuration from UI

View iSCSI data and error statistics

Management

Command Line Interface (CLI) through RS232 & SSH

“Single pane of glass” ManageTrends™ GUI

Simple customization and theme updates

Event Management

Detailed Event Log

Email Alerts

SNMP Traps (up to 4 destinations)

Remote Management

ManageTrends™ GUI

CLI (SSH)

Storage Data Management

Information Lifecycle Management (ILM)

Storage Resource Management / Reporting Module

Journaling Storage Module

Storage Pool Creation & Management

LUN (Logical Unit Number) Creation & Management

LUN Dynamic Volume Expansion

Dynamic NAS Volume Expansion

- Unified RAID Management
- Software RAID (0, 1, 5)
- Supports Hardware RAID controllers
- Auto RAID Rebuild

UPS Support

Smart UPS Support

Application Support

Microsoft® Exchange, Oracle®, SQL Server, VMware® Virtual Center, VMware® ESX Server and more

Advanced Features

High Availability Cluster

StorTrends iTX includes support for highly-available clustered StorTrends nodes. Multi-platform and OS agnostic HA technology allows two SAN heads to be clustered as highly available nodes for “always-up” availability and a robust DR solution.

Snapshot-assisted Replication

AMI's SAR technology allows chronological replication of snapshots on a remote machine, with the ability to organize by application-based consistency groups. In failover to a secondary appliance, StorTrends iTX will rollback to the latest consistent snapshot. iTX 2.7 features up to 9 levels of snapshot compression for better link bandwidth utilization, and encryption of snapshots for increased data security.

WAN Data Services (WDS)

As part of its Asynchronous Replication module, StorTrends iTX utilizes several techniques to optimize the speed of long distance WAN connections. It uses a mix of transport protocols to overcome the high latencies of TCP protocols in WANs and bandwidth throttling to improve bandwidth utilization. Additional performance gains are made through data reduction technologies such as compression, and data deduplication.

Advanced Snapshot Technology

AMI's Advanced Snapshot technology enables up to 1022 snapshots (R/O and R/W) at the block or file level. It allows for rapid creation and deletion of snapshots, for faster and more secure back-ups. This module allows users to mount, review and instantaneously roll back to a snapshot with near-zero performance degradation.



American Megatrends Inc. | www.ami.com

5555 Oakbrook Parkway, Suite 200

Norcross GA 30093 | t: 770.246.8600

Sales & Product Information

sales@ami.com | t: 800.828.9264

Technical Support

support@ami.com | t: 770.246.8645

* Amount of storage capacity supported may be limited due to specific hardware constraints