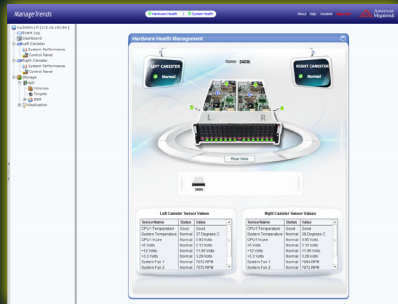


StorTrends® 3400i 3U Dual Controller IP-SAN Appliance

StorTrends.
storage without boundaries™



3U StorTrends 3400i



StorTrends iTX Health Monitor Screen

The StorTrends 3400i is a 3U Dual Controller IP-SAN Storage Solution with sixteen hot-swappable hard drives scalable up to 256 TB of storage capacity. It features the latest version of StorTrends iTX Network Storage Software – StorTrends iTX 2.8 - which is optimized for this platform and designed to leverage the power and reliability of its dual controller design. This highly available and highly reliable storage appliance comes at an outstanding price, to provide true enterprise-class performance in an SMB-friendly package. It can be deployed in existing Ethernet networks and has the capacity to support the entire data storage needs of corporations and institutions.

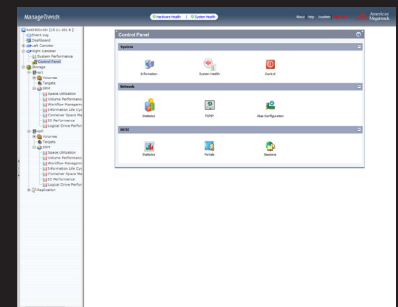
This newest addition to the StorTrends lineup includes a host of new features, including true Active / Active High Availability with dual controller configuration: if one of the system's controllers fails, the secondary takes over immediately with no loss of data or uptime. It also can provide outstanding Disaster Recovery from physical and network catastrophes with 8,048 read only/writeable snapshots, thanks to the 64-bit architecture of StorTrends iTX 2.8. Users interested in expanding their storage capacity can easily cascade StorTrends 3201j JBOD units behind the StorTrends 3400i head to increase capacity with a minimum of effort. The StorTrends 3400i also features Data Archiving with Deduplication, which works with the WDS feature of Volume Replication to apply data deduplication on the secondary appliance at the disaster recovery site to conserve storage space and greatly increase data archiving capabilities.

HARDWARE FEATURES

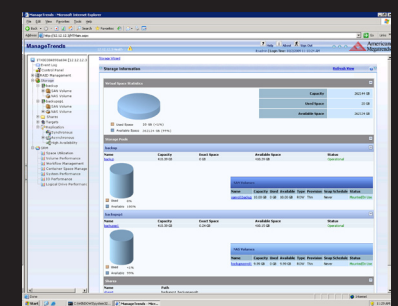
Hardware	StorTrends 3400i Dual Controller IP-SAN
Form Factor	3U, 16 bay
Weight	110 lbs (50 kg)
Dimensions	17.2" x 5.2" x 24.2" (437 x 132 x 615 mm)
Power Supply Redundant	Yes
Power Supply Hot-swappable	Yes
Hard Drive Bays	16
Hard Drive Interface	SAS
Drives Hot Swappable	Yes
Available Hard Drives	500 GB, 1TB , 2 TB SATA Hard Drives (7200 RPM SAS drives); 300 GB, 450GB, 600 GB SAS Hard Drives (15000 RPM SAS drives)
Array Capacity Configurations	8 TB, 16 TB, 32 TB (7200 RPM SAS drives); 4.8 TB, 7.2 TB, 9.6 TB (15000 RPM SAS drives)
Processor (CPU)	Dual Intel® 2.0 GHz E5504 Series Processors
Number of Processors	Two (2) QuadCore processors with one (1) processor per controller
Memory	8 GB (4 GB per controller x 2)
Network Interface Controller (NIC)	Four (4) GbE LAN Ports (2 NICs per controller); Two (2) 10 GbE Midplanes for internal connectivity
RAID Controller	Software RAID with RAID-RT™ Technology
RAID Support	RAID 5, 50 (Three Configurations: 1 x RAID 5, 2 x RAID 5, or 1 x RAID 50)

SOFTWARE FEATURES

iSCSI Support	Yes
Advanced Snapshot Module	Yes
Maximum Number of Snapshots	8,048 per appliance (read-only/writable)
Archiving with Deduplication	Yes
Asynchronous Replication	Yes (Snapshot Assisted)
WAN Data Services (WDS)	Yes
Active/Active and Active/Passive High Availability (HA) between controllers	Yes
Auto Tiering / Thin Provisioning	Yes
Information Lifecycle Management	Yes
Capacity Expansion with StorTrends 3201j JBOD	Yes



StorTrends iTX Control Panel



StorTrends iTX Capacity Monitor Screen



American Megatrends Inc. | www.ami.com | 5555 Oakbrook Parkway, Suite 200 | Norcross GA 30093 | t: 770.246.8600
Sales & Product Information: sales@ami.com | t: 800.828.9264
Technical Support: support@ami.com | t: 770.246.8645