

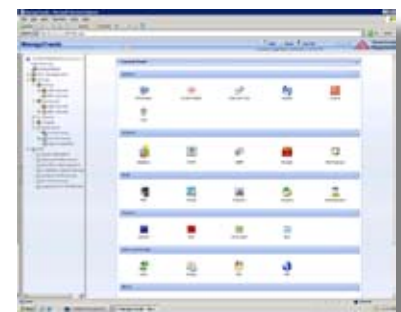
StorTrends® 3200na 3U ADVANCED NAS Appliance



The StorTrends® 3200na is an affordable 3U rack-mount Network Attached Storage (NAS) appliance. It features the Advanced NAS version of StorTrends iTX Data Storage Software and the capacity to support the entire data storage needs of corporations and institutions. This robust storage appliance provides a reliable way to manage, store and protect valuable business data without complexity.

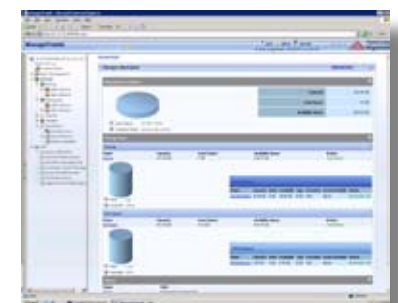
StorTrends® data storage products provide true enterprise-level performance, and the StorTrends 3200na is no exception. It makes an ideal alternative to traditional Direct Attached Storage (DAS) environments and is perfect for rapidly growing organizations, because of its ability to centralize file data storage from Windows®, UNIX, Linux and Mac® clients across an existing Ethernet network and ensure its safety and accessibility. The 3200na also has the potential for significant capacity expansion. When used as the storage head for a chain of up to three StorTrends® 3201j JBOD units, storage capacity can be increased to a massive 128 TB of storage space.

HARDWARE FEATURES	Hardware	StorTrends 3200na ADVANCED NAS Appliance
	Form Factor	3U, 16 bay
	Weight	96 lbs. (43.5 kg)
	Dimensions	5.2" (132 mm) H x 17.2" (437 mm) W x 25.5" (648 mm) D
	Power Supply Redundant	Yes
	Power Supply Hot-swappable	Yes
	Fan Hot-swappable	Yes
	CD-ROM Drive	Yes
	Hard Drive Bays	16
	Hard Drive Interface	SAS / SATA
	Drives Hot Swappable	Yes
	Available SATA Hard Drives	250 GB, 500 GB, 750 GB, 1 TB, 2 TB
	Maximum Capacity with SATA	4 TB, 8 TB, 12 TB, 16 TB, 32 TB
	Available SAS Hard Drives	146 GB, 300 GB, 450 GB, 600 GB
	Maximum Capacity with SAS	2.3 TB, 4.8 TB, 7.2 TB, 9.6 TB
	Processor (CPU)	Dual-Core Intel® Xeon® Processor 5000 Series
	Number of Processors	2 processors
Memory	2 GB DDR2 RAM	
Network Interface Controller (NIC)	Four (4) Gigabit Ethernet ports (optional up to 6 NICs)	
RAID Controller	Hardware and Software RAID	
RAID Support	0, 1, 5, 6, 10, 50, 60	



StorTrends iTX Control Panel

SOFTWARE FEATURES	iSCSI Support	No; Available on IP-SAN models only
	NAS Support	Yes
	Advanced Snapshot Module	Yes
	Maximum Number of Snapshots	1022 per appliance (read-only/writeable)
	Synchronous Replication	Available on Advanced IP-SAN models only
	Asynchronous Replication	Yes, Snapshot Assisted Replication (SAR)
	Snapshot Assisted Replication (SAR)	Yes
	Journal Assisted Replication (JAR)	Available on 3200ia IP-SAN model only
	WAN Data Services (WDS)	Yes
	OS-agnostic High Availability (HA)	Available on Advanced IP-SAN models only
	Continuous Data Protection (CDP)	Available on 3200ia IP-SAN model only
	Thin / Auto Provisioning	Yes
	Information Lifecycle Management	Yes
	Capacity Expansion with StorTrends 3201j JBOD	Yes



StorTrends iTX Capacity Monitor Screen

Each StorTrends IP-SAN and NAS Appliance features StorTrends iTX Data Storage Software. The features included in the ADVANCED NAS version of StorTrends iTX are shown above.

StorTrends®
storage without boundaries™



American Megatrends Inc. | www.ami.com | 5555 Oakbrook Parkway, Suite 200 | Norcross GA 30093 | t: 770.246.8600
Sales & Product Information: sales@ami.com | t: 800.828.9264
Technical Support: support@ami.com | t: 770.246.8645